

moustache monty

An adapter to hold a
trombone by

meru
disabilities to possibilities



About Monty

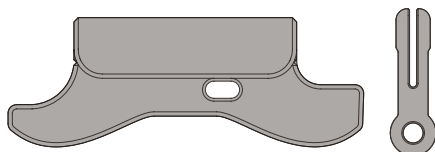
Monty is a helpful moustache that will hold a trombone whilst it is being played.

Monty fits onto the Millennium Cymbal Stand, and can hold onto the following trombones;

JTB500Q, JTB700Q, JTB700SQ,
JTB700V, JTB700VS, JTB700VR,
JTB1100Q, JTB1100SQ, and JTB1100RQ

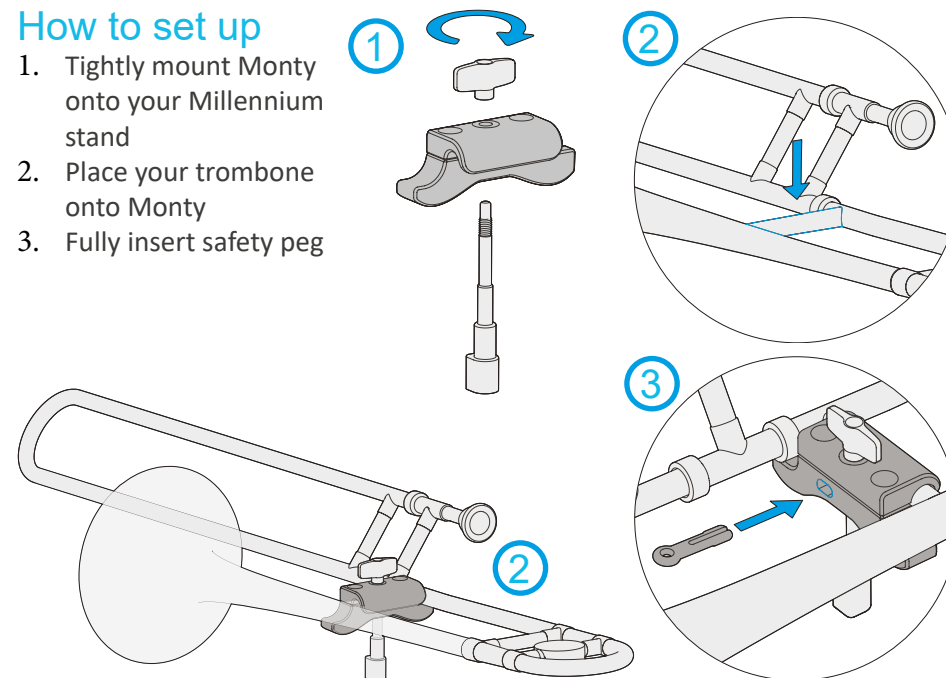
Contents

1x Monty
1x safety peg



How to set up

1. Tightly mount Monty onto your Millennium stand
2. Place your trombone onto Monty
3. Fully insert safety peg



Warranty

This product is warranted by MERU to be free from defects in materials and workmanship for a period of 12 months from the date of delivery. If any defect is found within this period, MERU will repair, or at its discretion, replace the device without charge for materials and labour. This Warranty is subject to the provision that the device:

- has been used solely in accordance with these instructions for the purpose for which it was intended
- has not been subjected to misuse or accident, or been modified or repaired by any person other than someone authorised by MERU.
- has been correctly set up

This warranty does not affect your statutory rights.

About MERU

MERU is a charity that exists to improve life for children and young people with disabilities. We do this by designing and custom-making specialist equipment for use at home, at school or college, in hospital or at play. We are here to help when no ready made solution exists to meet a child or young person's needs. To help fund our charitable work we manufacture and sell products such as Flexzi.

Unit 2 Eclipse Estate, 30 West Hill, Epsom, Surrey KT19 8JD, UK
+44 (0)1372 725203 | info@meru.org.uk | www.meru.org.uk

Medical Engineering Resource Unit Registered Charity No 269804 Company Limited by Guarantee No 1214125

